

Hiroshima City University



## Founding Principle

Hiroshima City University holds, as its Founding Principle, to become an international university that contributes to the realization of world peace and the prosperity of local communities through taking advantage of its strength in the sciences and the arts. This corresponds with the spirit of Hiroshima City. The Founding Principle assigns the University the mission of pursuing education and research in specialized academic fields, to nurture future generations with a future-oriented sensibility and creativity, to contribute to local communities through education and research, and thus to contribute to the development of culture and society.

As a university established in Hiroshima City which aims to be an international city of peace and culture, the University has the Faculties and the Graduate Schools of International Studies, Information Sciences, and Arts. It also has the Hiroshima Peace Institute which was established as a think tank for the purpose of pursuing world peace and the happiness of all mankind.

Through unique education and research, our University is focused on responding to the needs of the contemporary world, working and living together with local communities, and establishing itself as a hub of wisdom in Hiroshima and a source of pride for the people of the city.



# History of Hiroshima City University

Hiroshima City University was established in April 1994, with the three Faculties of International Studies, Arts, and Information Sciences. The Graduate Schools of the three academic fields were then established and Master's programs commenced in April 1998, and doctoral programs in April 2000. At the same time the Hiroshima Peace Institute was also established in April 1998.

This was followed by the opening of a number of facilities in order to provide students with comprehensive support in their academic and social life throughout their time at our University: the Industrial Liaison Office in 2003 which later developed into the Center for Industry and Public Relations in 2007, the International Exchange Promotion Center in 2013, the satellite campus in 2013, and the Career Center in 2014.

In 2010, the University was corporatized, as were a number of other national and public universities across Japan. This substantial change in management system gave the University more autonomy in overall management.

Having celebrated its 20th anniversary in 2014, the University has been and will be focused on education and research for decades to come, making the most out of the uniqueness of a university established in the atomic-bombed city Hiroshima, in order to provide both students and society with educational and social contributions.

## Mission and Vision

Hiroshima City University guides students to develop a profound sensibility and a passion for truth-finding, to appreciate and respect various different cultures and senses of value, and to pursue peace. The students are also expected to become capable of contributing to society with a wide range of knowledge, reliable expertise, and high ethical standards.

# Organization

## Faculties

### Faculty of International Studies

Department of International Studies

### Faculty of Information Sciences

Department of Computer and Network Engineering

Department of Intelligent Systems

Department of Systems Engineering

Department of Biomedical Information Sciences

### Faculty of Arts

Department of Fine Arts

Department of Design and Applied Arts

## Graduate Schools

### Graduate School of International Studies

Master's Degree Program

Major in International Studies

Doctoral Degree Program

Major in International Studies

### Graduate School of Information Sciences

Master's Degree Programs

Major in Computer and Network Engineering

Major in Intelligent Systems

Major in Systems Engineering

Major in Biomedical Information Sciences

Doctoral Degree Program

Major in Information Sciences

### Graduate School of Arts

Master's Degree Program

Major in Design and Arts

Doctoral Degree Program

Major in Comprehensive Design and Arts

## Research Institute

Hiroshima Peace Institute

## Facilities

Library / Language Center / Information Technology Center /

Art Museum / Center for Industry and Public Relations /

International Exchange Center / Career Center

# The Faculty of International Studies



## Degree

At the end of the undergraduate education, students can obtain a Bachelor of International Studies.

## Educational Concept

To accommodate students' individual interests and needs, the Faculty prioritizes the following concepts:

### **Interdisciplinary education**

While students have the opportunity to focus on a specialized field of study, they are also encouraged to study from an interdisciplinary curriculum.

### **Five Study Programs**

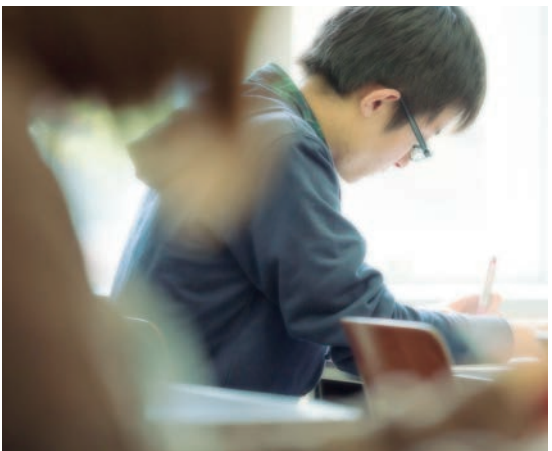
The Faculty offers five collaborative programs which allow students to graduate possessing a broad knowledge.

### **Small-class seminars**

Students join small-class seminars which allow for meaningful exchanges of opinions and ideas between students and faculty.

### **Support system**

The Faculty assists students with academic and non-academic issues. In addition, they are involved in student organizations and extracurricular groups.



## Admission Policy for Prospective Students

Those who have the desire to become leaders of the 21st century, who want to take advantage of new language skills, who want to be active in business environments, or who are interested in solving problems at home or abroad, apply for our undergraduate programs. Our students should possess the following qualities:

### **Desire to study in a 21st-century international community**

An attitude which will enable them to pursue solutions for current problems in both local and international environments.

### **Eagerness to pursue the promotion of international coexistence**

Interest and desire to explore all possible ways of minimizing international problems related to coexistence, and to improve communication in order to promote peaceful coexistence.

### **Desire to develop the ability to take action, both in regional and international settings**

An attitude which will enable them to create a platform for contributing to local areas and extending their activities internationally.



# The Graduate School of International Studies

## Degrees

At the end of the Master's degree program, students can obtain one of the following degrees:

- Master of Arts in International Studies
- Master of Arts
- Master of Arts in Peace Studies

At the end of the doctoral degree program, students can obtain one of the following degrees:

- Doctor of Philosophy in International Studies
- Doctor of Philosophy
- Doctor of Philosophy in Peace Studies

## Education and Research Features

1. In order to respond to the increasingly diversified needs of today's international community and to address various global issues, the Graduate School provides students with courses that are flexible and conducive to interdisciplinary education and research.
2. Emphasis is placed on international, interdisciplinary, and practical education and research.
3. In terms of program duration, the Graduate School offers a half-year semester system to accommodate working adults, overseas returnees, and international students.
4. Offering both day and evening classes, the Graduate School is accessible for working adults wishing to enroll in graduate programs while remaining employed.



# The Faculty of Information Sciences



## Degrees

At the end of the undergraduate education, students can obtain one of the following degrees:

- Bachelor of Information Sciences
- Bachelor of Computer Engineering

## Educational Concept

The Faculty of Information Sciences aims to train future researchers and engineers who are committed to research and development.

### **A wide variety of courses to meet students' needs**

Once potential students acquire foundational knowledge of Information Sciences, they have the option to choose from a wide array of electives.

### **Teaching the skills for success**

Students will acquire fundamental skills in mathematics, programming, and English to help facilitate their further development in the field of Information Sciences.

### **Information Communication Technology**

Students will acquire Information Communication Technology (ICT) skills for the purposes of disseminating information.

### **Special topics**

Students will have the opportunity to refine their skills through special topics offered by the faculty.

### **Emphasis on practical, hands-on learning**

Students gain valuable experience and understanding to succeed in today's information-based society through practical applications, problem-solving, and presentations.

### **Students from all academic backgrounds are welcome**

We are committed to meeting the needs of students of various levels of knowledge and training by offering small classes according to their academic experience.

## Admission Policy

We welcome prospective students pursuing a future in the rapidly growing field of Information Sciences.

We seek applicants who: are enthusiastic about the field of Information Sciences; are highly motivated and ambitious; enjoy tackling challenges; are inquisitive by nature; and have a good command of mathematics, sciences, and foreign languages.



# The Graduate School of Information Sciences

## Degrees

At the end of the Master's degree program, students can obtain one of the following degrees:

- Master of Information Sciences
- Master of Computer Engineering

At the end of the doctoral degree program, students can obtain one of the following degrees:

- Doctor of Information Sciences
- Doctor of Computer Engineering

## Education and Research Features

1. Highly specialized, integrates science and engineering, and covers a wide range of subjects from mathematics, basic logic and computers, Artificial Intelligence (AI) to human interfaces.
2. A wide range of classes which provide both academic and practical knowledge from basic to applied levels, in order to meet the sophistication and diversity of Information Sciences.
3. A flexible semester system in which students have the option of completing all courses within a year.
4. A series of core courses taught by each department, in order to provide students with specialized knowledge.
5. Independent projects and studies assigned to students to help them develop the creativity and independence necessary to become skilled researchers and engineers.
6. Students can acquire cutting-edge advice and wisdom through guest lectures given by speakers at the forefront of the field.
7. All teaching and research is assisted by state-of-the-art multi-media networks.

# The Faculty of Arts



## Degree

At the end of the undergraduate education, students can obtain a Bachelor of Art.

## Educational Concept

The Faculty of Arts is a lively, supportive environment which provides students with a venue to consider art as a social medium and to integrate their work in local and international communities.

### Emphasis on foundation skills

Our program focuses on the mastery of core skills and techniques. Through the acquisition and mastery of these techniques, students will explore various methodologies of observations and also production of their own art forms.

### A diversified, comprehensive education

Building upon a rich and extensive art tradition, students are challenged with a broad scope of techniques through which to pursue their work. Based on the notion of diversity, the program aims to support students to locate their own practice in a historical and contemporary context.

### Focus on local and international communities

With a focus on community building through art, students are provided with a venue to engage the public and further understand the social and cultural ramifications of art, through cooperation with the local community and academic exchanges with overseas institutions.





## Admission Policy

The Faculty endeavors to provide a supportive learning environment for creative-minded individuals who are capable of adapting to changing trends, and enthusiastic about experimenting with various methods of self-expression. An emphasis is placed on the role of aesthetics and creative activity in local and international communities.

The ideal candidate for this program should possess a keen sense of creativity, the ability to observe and critique a body of work, and the desire to further hone their skills of self-expression.

Students will have the opportunity to experiment with various techniques and develop the skills in their chosen area of concentration.

A primary feature of this program is its focus on community and international exchange. Through rigorous study and practice, students explore the social role of art through a production-based approach in the community at large.



# The Graduate School of Arts

## Degrees

At the end of the Master's and doctoral degree programs, students can obtain a Master of Art or a Doctor of Art respectively.

## Education and Research Features

1. A rigorous and dynamic research and education program further developing professionals in creative practices, placing importance on classical studies, and creating interpretations of traditional art and culture through a contemporary perspective.
2. An innovative research and education program utilizing new materials and technology, as well as innovative ideas, to promote cutting-edge expressions that meet the demands of an electronic media society, and also free artistic expressions that break the mold.
3. A research and education program promoting better understanding of art theory and history, pursuing creative activities that align with modern society.
4. Fostering the integration of advanced theoretical perspectives and advanced technical training for the production and application of creative expression.
5. Promoting local culture and international cultural exchange through art and culture, as well as providing education and research to support students in taking on leadership roles in society and the arts.





# The Hiroshima Peace Institute

## The hub of wisdom in an international city of peace and culture, Hiroshima

As a university located in the first atomic-bombed city, Hiroshima, Hiroshima City University has the Hiroshima Peace Institute (HPI) which was established on April 1, 1998. The Institute is focused on contributing through academic research towards nuclear abolition, the achievement of sustainable global peace, and the development of local societies.

### Major research areas

1. Nuclear issues and disarmament
2. Peace and human security

### Contribution to education, local communities, and the world

The research activities of HPI are publicized through academic publications, its website, newsletter, and public events including symposiums, public lecture series, and research forums. In the area of education, the research staff of HPI pass on their research outcomes through teaching in both undergraduate and graduate courses, as well as the intensive summer course “HIROSHIMA and PEACE”.



# Hiroshima

## —an international city of peace and culture

Hiroshima is one of the best cities for living and studying in Japan. A hub of the Chugoku Region, the city has a population of over one million and it is always full of fun and excitement. In the city center, there are a wide variety of shops, restaurants, museums, concert halls, and sports facilities. You should not miss the chance to try the famous local cuisine *okonomiyaki*, to experience the atmosphere at a game of the baseball team Hiroshima Carp or the soccer team Sanfrece Hiroshima, or to enjoy the sounds of the Hiroshima Symphony Orchestra. Despite its urban nature, you can also enjoy a unique sense of calmness, as the city is rich in greenery and waterways. With two UNESCO World Heritage Sites, the Atomic Bomb Dome in the city center and the Itsukushima Shrine in the vicinity, the city attracts people from both within the country and abroad.



# Studying at Hiroshima City University

For the purpose of internationalizing the education and research at Hiroshima City University, we welcome overseas students who may be accepted based on entrance examinations. The application period is usually late January and the examinations take place between late February and mid-March.

For more details, please contact the Admissions Section.

E-mail: nyushi@office.hiroshima-cu.ac.jp

Phone: +81-(0)82-830-1503

Fax: +81-(0)82-830-1823

The University also accepts research fellows who conduct research on a specified theme under the supervision of an assigned supervisor, which is not designed to award a formal degree or qualification. Those who wish to apply for a place should contact a prospective supervisor to obtain personal acceptance before submitting a completed application form to the University. The selection process is conducted by means of screening the applications, and an interview may be arranged when necessary.

Those who belong to our partner institutions and wish to apply for an exchange student program, please contact the international office at your home institution.

## Partner Institutions

- [The USA]** University of Hawai'i at Mānoa
- [Korea]** Ewha Womans University  
Seokyeong University
- [China]** University of International Relations  
Southwest University  
Shanghai University
- [France]** L'Université d'Orléans  
L'Université de Rennes 2 (Rennes 2 University)
- [Germany]** Alanus Hochschule (Alanus University of Arts and Social Sciences)  
Hochschule Hannover (University of Applied Sciences and Arts)  
Humboldt-Universität zu Berlin  
weißensee kunsthochschule berlin (Berlin Weißensee School of Art)
- [Costa Rica]** The University for Peace
- [Morocco]** Mohammed V University

# Campus Life and Support

## **Finance**

Various scholarships offered by public interest incorporated foundations and other organizations are available. Subject to certain specified conditions, Hiroshima City University also exempts students from part or all of the entrance examination fees, enrollment fees and tuition fees, and may extend tuition payment deadlines by a certain length of time.

## **Housing and daily life**

The University continuously updates and makes available to students information concerning housing, such as studio apartments and private boarding houses.

## **Extracurricular activities**

The University provides information on a wide variety of events via campus bulletin boards, digital signage and the University's portal site, so that both Japanese and international students can enjoy campus life. Such events include on-campus events to promote international exchange, as well as international speech contests in Japanese, short-term homestay programs, Japanese culture experience programs and other events held in and around Hiroshima City for international students.

## **Mental and physical health, and safety**

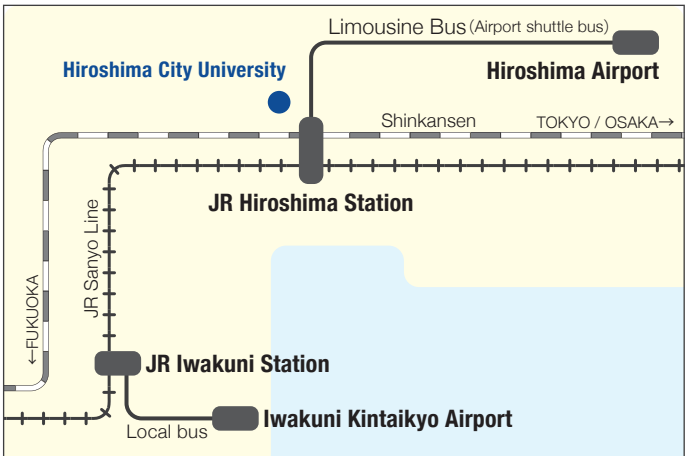
The Health Care Center (treatment room and health counseling room), located on the first floor of the Administration Building, provides not only treatment for illness and injuries but also health counseling.



# Access to Hiroshima City University

Hiroshima is a hub of the Chugoku Region and it is within easy reach of many parts of the country. Shinkansen trains (the bullet train) travel from all major Japanese cities to JR Hiroshima Station. If you travel by air, you can avail of either a Limousine Bus (Airport shuttle bus) from Hiroshima Airport, or a local bus and the JR Sanyo Line (local train) from Iwakuni Kintaikeo Airport.

Once you get to Hiroshima City, local bus services are the most convenient way to visit our University: you can travel by bus from either JR Yokogawa Station (approx. 15 min.) or Hiroshima Bus Center (approx. 20 min.), and get off at *Shirtsu Daigaku Mae* (Hiroshima City University) or the next nearest bus stop, *Numata Ryokinjo Mae* (the Numata Highway Tollgate).



# Where to click to find info



## About us

- ▶ Hiroshima City University
- ▶ Facilities and Services
- ▶ Access to the University
- ▶ Information for Students from Abroad
- ▶ Hiroshima Peace Institute

<http://www.hiroshima-cu.ac.jp/english/index.php>

# Hiroshima City University

3-4-1, Ozuka-Higashi, Asaminami-ku,  
Hiroshima, 731-3194, JAPAN

Phone: +81-(0)82-830-1500

Fax: +81-(0)82-830-1656

<http://www.hiroshima-cu.ac.jp/english/index.php>